

TROMBONE I

1

OVERTURE

MAESTOSO

CANTABILE *sf*

1

2

CUE PLAY!

3

POLO A POLO CRESC. *sfz*

VIVO

MOLTO RALL.

f

CRESL.

Musical staff with notes and dynamics. The staff contains several measures of music with notes, rests, and dynamic markings. The dynamics include *ff* and **SOLO**.

4

Musical staff with notes and dynamics. The staff contains several measures of music with notes, rests, and dynamic markings. The dynamics include *ff* and **SOLO**.

Musical staff with notes and dynamics. The staff contains several measures of music with notes, rests, and dynamic markings. The dynamics include *ff* and **SOLO**.

5

Musical staff with notes and dynamics. The staff contains several measures of music with notes, rests, and dynamic markings. The dynamics include *ff* and **SOLO**.

Musical staff with notes and dynamics. The staff contains several measures of music with notes, rests, and dynamic markings. The dynamics include *ff* and **SOLO**.

Musical staff with notes and dynamics. The staff contains several measures of music with notes, rests, and dynamic markings. The dynamics include *ff* and **SOLO**. It also features a triplet of notes and a 4-measure rest.

ANDANTE

Musical staff with notes and dynamics. The staff contains several measures of music with notes, rests, and dynamic markings. The dynamics include *ff* and **SOLO**. It also features a triplet of notes and a 3-measure rest.

V.S.

Three empty musical staves at the bottom of the page.

**GAY WALTZ IN 1**

7:  $\frac{3}{4}$  *mf*

**6**

*f*

**7**

**8**

**9**

**CUER**

**PLAY**

**p CRES.**

V.S.

12



*mp*



2

**OPEN 13 BROAD**

*f*



**VERY BROAD**

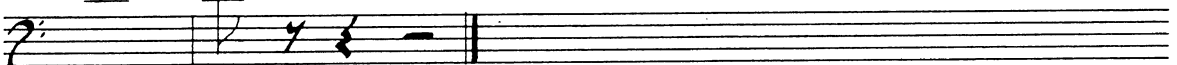
RALL.



*ff*

*fp*

*fff*



*fz > pp < ff*

**SEGUE (CUP)**

